

PHONIC

ACOUSTIC CEILING TILES

PHONIC FINE FISSURED

Mineral Fibre Acoustic Suspended Ceiling Tile



High Absorption



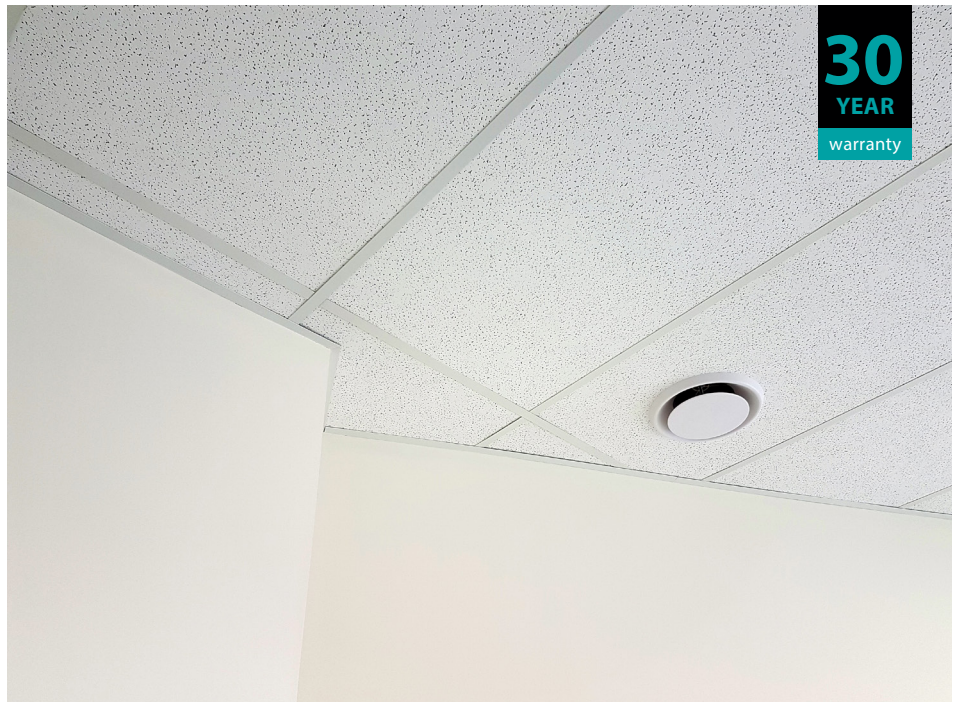
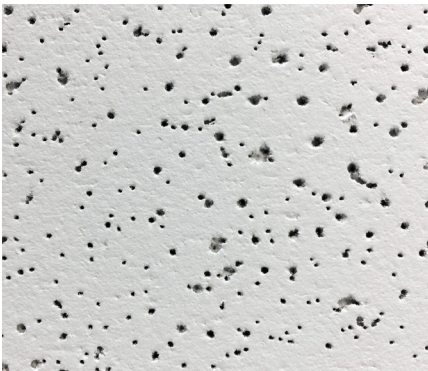
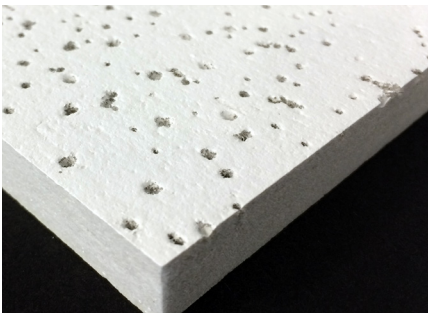
Hygrothermal



Fire Test- Group 1S



Mineral Fibre



PRODUCT SUMMARY

Phonic Fine Fissured Mineral Fibre Acoustic ceiling tile has a non-directional fissured clean white surface.

- The tile has a medium Noise Reduction Coefficient and medium Ceiling Attenuation Class to help reduce reverberation time and to prevent sound transfer through the ceiling plenum
- Fine Fissured is an economical tile in the Phonic range.
- The Fine Fissured tiles are favoured for their durability and ease of handling.
- Phonic Mineral Fibre Ceiling tile materials are not only non-combustible but also less likely to emit gas or smoke, or to melt, break or become deformed under normal fire conditions.
- 30 year lifetime system warranty to withstand conditions up to 40° - 99% relative humidity without visible sag when used with a T&R Interior Systems brand suspension system.

EMISSIONS, SUSTAINABILITY AND THE ENVIRONMENT

For Green Star rated projects, Phonic meets the Greenguard Emission Certificate standard.


PHONIC

ACOUSTIC CEILING TILES

PHONIC FINE FISSURED

Mineral Fibre Acoustic Suspended Ceiling Tile



GENERAL TEST DESCRIPTION	RESULT	TEST METHOD
Absorption (ISO 354)	NRC 0.45	ASTM C432-99
	α_w 0.45	ISO 11654
	SAA 0.47	ASTM C423-99
Attenuation (ASTM E1414-11A)	CAC 35	ISO 717-1
	$D_{n,c,w}$ 35	ISO 717-1
Light Reflectance	LR 1 75% +	ASTM C 523
Weight	15mm: 4.2kg/m ²	
Fire Test - ISO 5660 Parts 1&2	Group 1-S	BRANZ Cone Calorimeter
		NZBC C/AS1-AS27
Relative Humidity	RH 99%	
Thermal Conductivity	≥ 0.045 (kcal/mh°C)	JIS A 1412
Est. R-Value (m ² k/w)	R0.3	
Size	15mm Depth Square Edge x [1200x600], 15mm Depth Reveal Edge x [1200x600] [600x600] on indent only.	
	To suit 15 or 24mm grid patterns. Other sizes available on request.	
Colour	White	

Edge Detail



INGREDIENTS

Mineral Fibre - Made with 76% Recycled Content.

Post Industrial Total 70%- Slag wool 45%, Dust Sludge from ceiling tile production 25%, **Post Consumer Total 6%**- Recycled paper 6%, **Reused materials**- Mineral wool (by product of steel production), volcanic silicate, newsprint. **Recycled materials**- Mineral wool during the manufacturing process (preconsumed) and re collection from building/house demolition sites (postconsumed) newsprint.